

KENTALROOF CONFORT 355 T4 0,25kW (27935471PA)

GENERAL DATA



ROOF FAN WITH HINGED SYSTEM AND ABS COWL

MANUFACTURING FEATURES:

- ABS protection cowl easily removable for access to motor and impeller thanks to the integrated folding system. The ABS cowl is characterized by its toughness, resistance to impacts and is able to withstand extreme ambient temperatures. 100% of the ABS used in the this cowl is recycled.
- The design of the cowl with a **rounded shape** is specific to minimize the risk of water ingress due to rain.
- Equipped with a **hinged system** to open the motor-impeller set. This system allows easy maintenance and cleaning of the set without the need to disassemble the entire structure. The opening is possible in 2 inclinations: approximately 45° and 90°, as required by the intervention.
- Structure in anticorrosive galvanized steel and support frame for adaptation to the roof with anti-bird protection grid.
- High-performance, backward-curved blade (reaction) impellers designed to work without scroll. Self-cleaning system, built in galvanized steel treated with anti-corrosion.
- Standard asynchronous squirrel cage motor with IP-55 protection and Class F insulation. Standard voltages 230V 50Hz for single phase motors, 230/400V 50Hz for three phase motors up to 4kW & 400/690V 50Hz for higher powers and 400V 50Hz for 2 speed motors.

APPLICATIONS

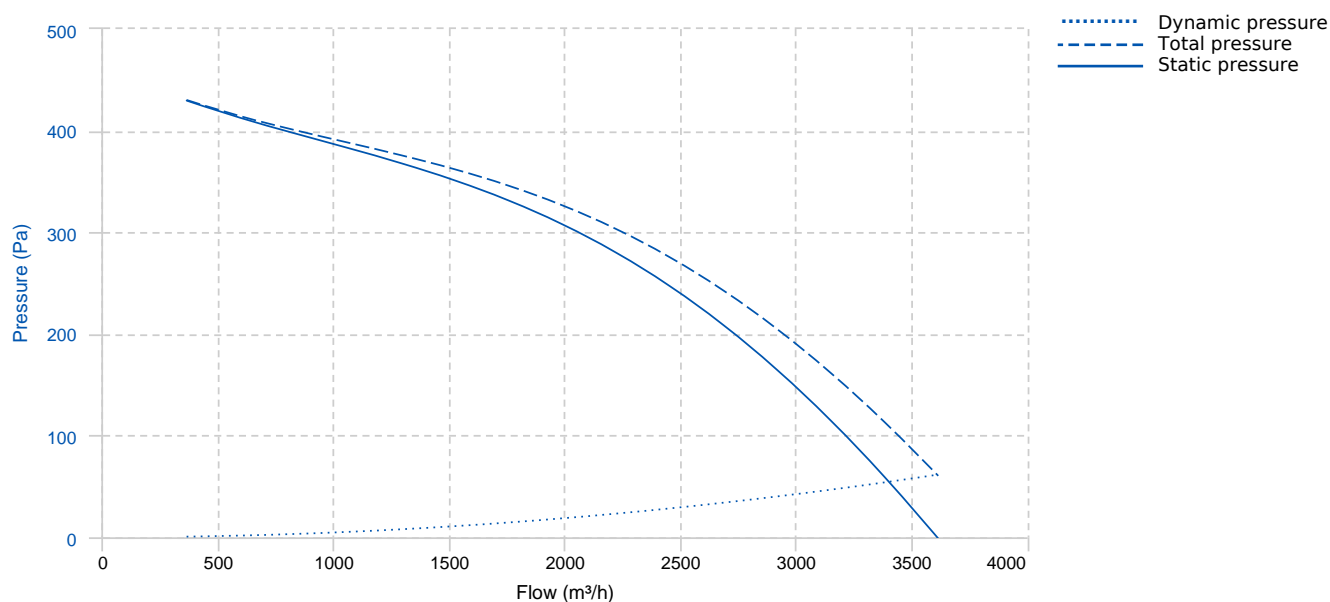
Designed for deck or roof mounting, they are indicated for:

- Smoke extraction.
- Air renewal in all types of buildings and industries.
- Maximum continuous working temperature: transported air 80°C, ambient 60°C to -25°C in three-phase motors.

UNDER REQUEST

- Special voltages.

PERFORMANCE CURVE



TECHNICAL DATA

Fan

| | | | | | |
|-----|------|----------------|-------|-----------|-----------|
| RPM | 1400 | Approx. weight | 41 kg | Max. Flow | 3610 m³/h |
|-----|------|----------------|-------|-----------|-----------|

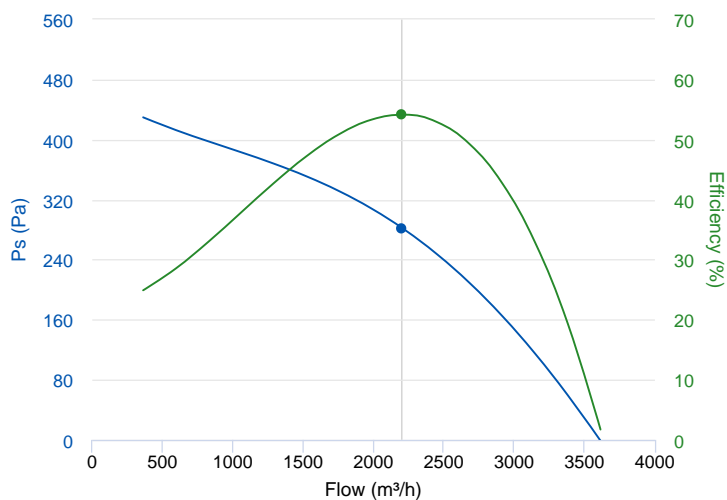
Motor

| | | | | | | | |
|-------|---------|----------------|--------|---------------|--------|---------------|--------|
| Power | 0,25 kW | RPM | 1400 | I max. (230V) | 1,38 A | I max. (400V) | 0,79 A |
| Size | 71 | Approx. weight | 5.4 kg | | | | |

ERP DATA

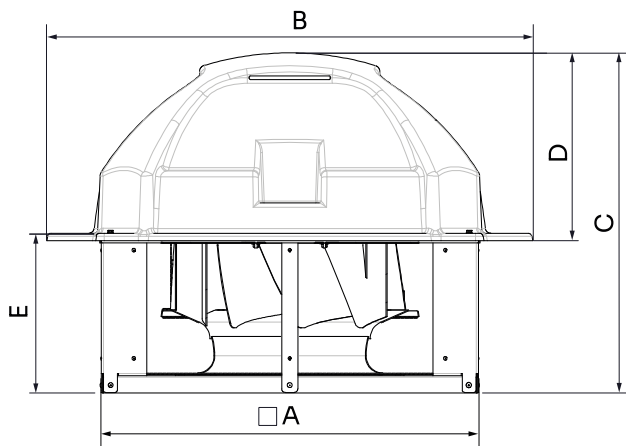
Fan data sheet

| | | |
|--------------------------|--|------------------------------|
| Fan type | Unit for non-residential ventilation (LOT 6) | |
| Typology | Unidirectional | |
| reports.other | None | |
| Type of driver | None | |
| Motor power (kW) | 0.25 | |
| | Fan values | ERP Requirements 2018 |
| Max. efficiency (%) | 54.14 | 35.14 |
| Effic. Heat recovery (%) | - | |
| Pabs (kW) | 0.331 | |
| Flow (m³/h) | 2202.75 | |
| Static pressure (Pa) | 282.28 | |
| Speed (m/s) | 6.18 | |



| | Fan values | ERP Requirements 2018 |
|---------------------------|------------|-----------------------|
| SFP (W/m ³ /s) | 540.56 | |

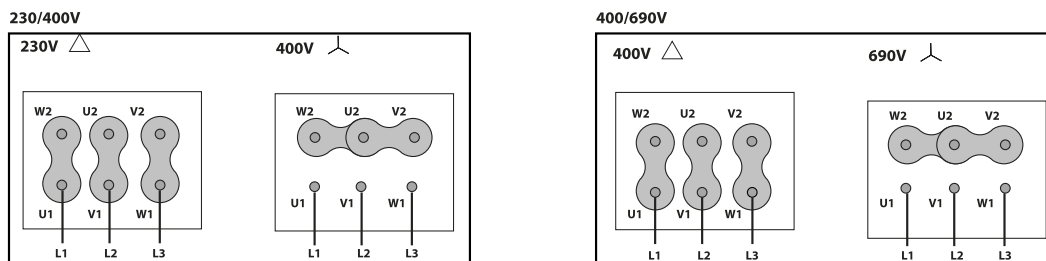
DIMENSIONS



Dimensions (mm)

| A (int) | 662 | B | 865.3 | C | 624.5 | D | 365 | E | 272.5 |
|---------|-----|---|-------|---|-------|---|-----|---|-------|
|---------|-----|---|-------|---|-------|---|-----|---|-------|

WIRING DIAGRAM



ACCESSORIES



SAFETY SWITCH
INT 25 3P A
REF: INT253PA



CONNECTION FLANGE
AC 350
REF: 960003211



CIRCULAR SILENCER
SIL-C 355/355
REF: 960355355



CIRCULAR SILENCER
SIL-C 355/710
REF: 960355071



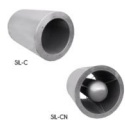
CIRCULAR SILENCER
SIL-CN 355/532
REF: 961355532



CIRCULAR SILENCER
SIL-C 355/532
REF: 960355532



CIRCULAR SILENCER
SIL-CN 355/355
REF: 961355355



CIRCULAR SILENCER
SIL-CN 355/710
REF: 961355071



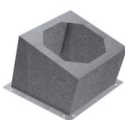
CIRCULAR-CIRCULAR ANTI-VIBRATION FLANGE
BAD 10 (Ø350)
REF: 960003460



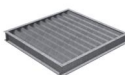
FREQUENCY SPEED CONTROLLER
SFC 230 I 2,5A *
REF: SFC230I003



FREQUENCY SPEED CONTROLLER
SFC 400 III 1,2A *
REF: SFC400III1



INCLINED ROOF FAN SUPPORT
BTI 640
REF: A-50870640XX



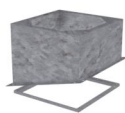
DEPRESSION DAMPER (HORIZONTAL or VERTICAL PLACEMENT)
CMP-HUT 500x510
REF: CMPHUT5051



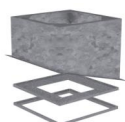
KENTALROOF VERTICAL DISCHARGE
KV KENTALROOF 355
REF: KVKNTR355



BTI + ACMP MOUNTED
BTI+ACMP 640
REF: BTIACMP640XX

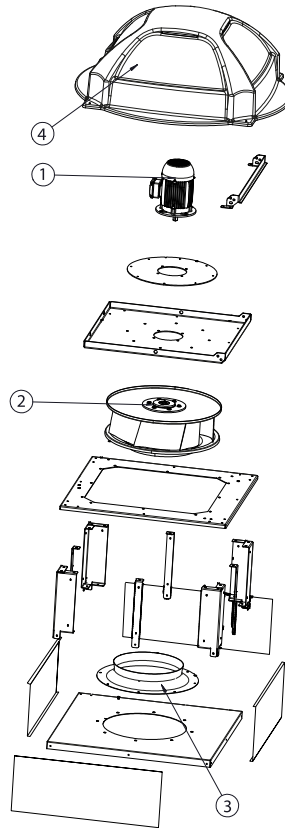


BTI + AMC MOUNTED
BTI+AMC 640
REF: BTIAMC640XX



BTI + ACMP+AMC MOUNTED
BTI+ACMP+AMC 640
REF: BTIACMPAMC640XX

SPARE PARTS



| | Code | Model | Qty |
|---|----------------|------------------------------|-----|
| 1 | 721001126 | MOTOR 0,25kW T4 B5 230/400V | x1 |
| 2 | R-R63D1L355-14 | IMPELLER R63D1L355x100x14 LG | x1 |
| 3 | R-BAD355PK1 | INLET CONE ED11P 355 | x1 |
| 4 | R-279404478 | ROOF COWL KENTALROOF 355-450 | x1 |